

Building Elements 1

Laurence D. Finston

Created: May 29, 2012

Last updated: June 23, 2012

This document is part of GNU 3DLDF, a package for three-dimensional drawing.

Copyright © 2012 The Free Software Foundation

GNU 3DLDF is free software; you can redistribute it and/or modify it under the terms of the GNU General Public License as published by the Free Software Foundation; either version 3 of the License, or (at your option) any later version.

GNU 3DLDF is distributed in the hope that it will be useful, but WITHOUT ANY WARRANTY; without even the implied warranty of MERCHANTABILITY or FITNESS FOR A PARTICULAR PURPOSE. See the GNU General Public License for more details.

You should have received a copy of the GNU General Public License along with GNU 3DLDF; if not, write to the Free Software Foundation, Inc.,
51 Franklin St, Fifth Floor, Boston, MA 02110-1301 USA

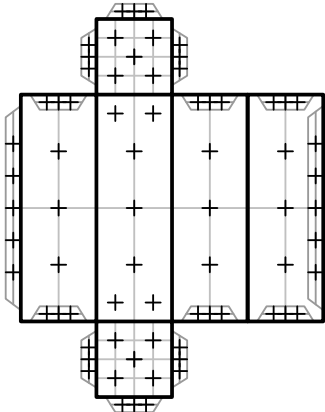
Contents

| | |
|---------------------------------------------------|-----------|
| Instructions | 1 |
| Rectangular Right Prisms | 2 |
| <i>Single Tabs</i> | 2 |
| <i>Double Tabs</i> | 3 |
| Rectangular Non-Right Prisms | 6 |
| <i>Single Tabs</i> | 6 |
| <i>Double Tabs</i> | 8 |
| Parallelepipeds | 12 |
| <i>Single Tabs</i> | 12 |
| <i>Double Tabs</i> | 13 |
| Prisms with Two Different End Angles | 15 |
| <i>Single Tabs</i> | 15 |
| <i>Double Tabs</i> | 16 |

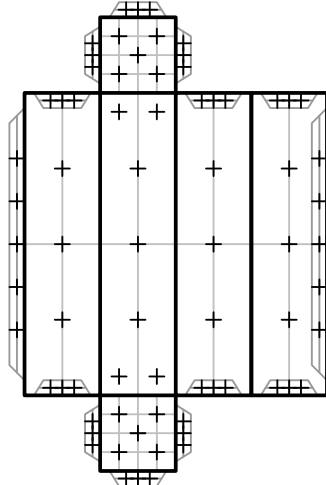
Instructions

Rectangular Right Prisms

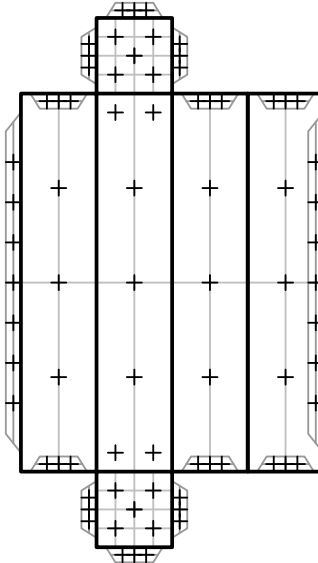
Single Tabs



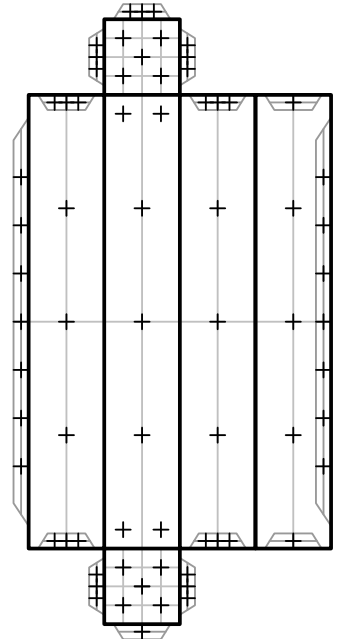
Ends: 1cm × 1cm
Sides: 1cm × 3cm



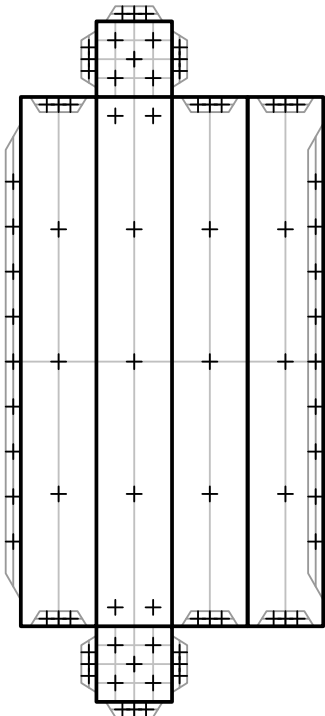
Ends: 1cm × 1cm
Sides: 1cm × 4cm



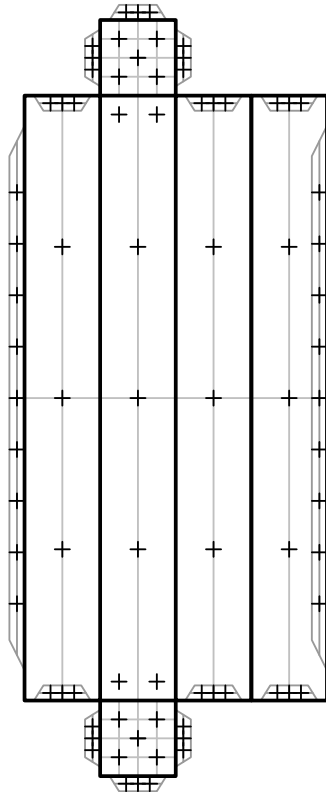
Ends: 1cm × 1cm
Sides: 1cm × 5cm



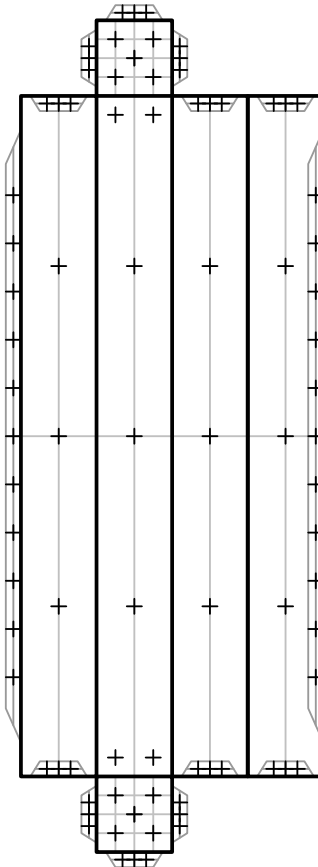
Ends: 1cm × 1cm
Sides: 1cm × 6cm



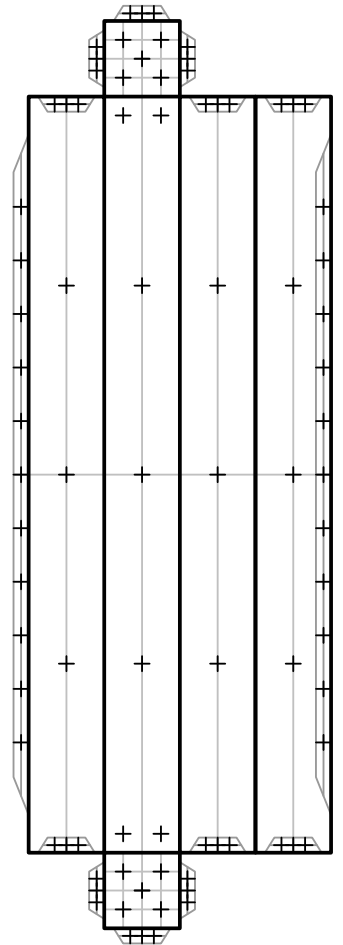
Ends: 1cm × 1cm
Sides: 1cm × 7cm



Ends: 1cm × 1cm
Sides: 1cm × 8cm



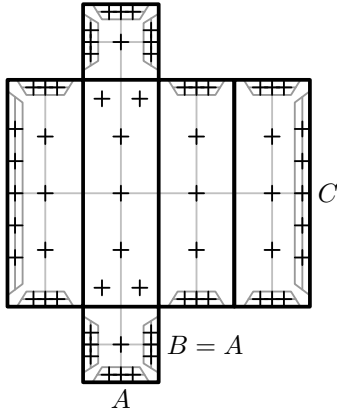
Ends: 1cm × 1cm
Sides: 1cm × 9cm



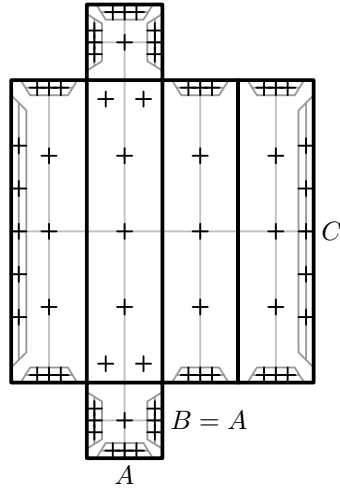
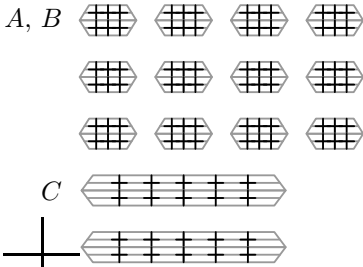
Ends: 1cm × 1cm
Sides: 1cm × 10cm

Rectangular Right Prisms

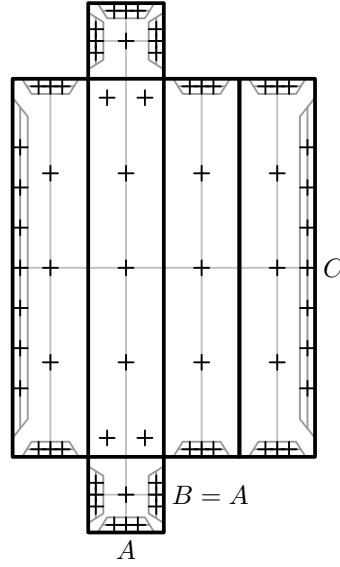
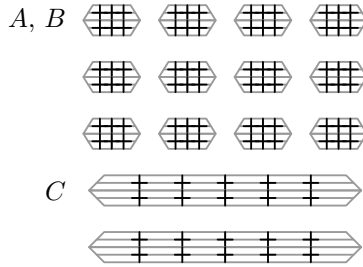
Double Tabs



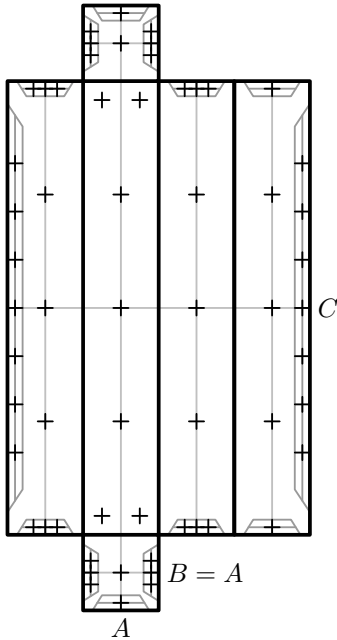
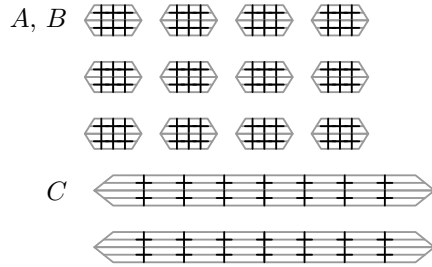
Ends: 1cm × 1cm
Sides: 1cm × 3cm



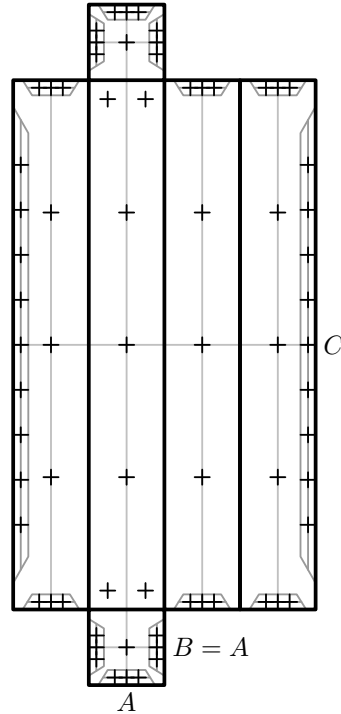
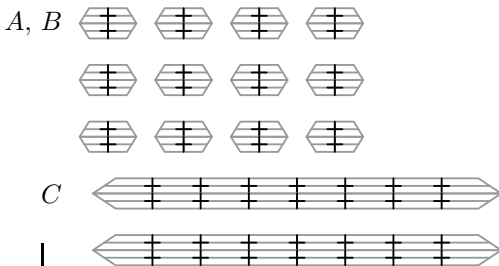
Ends: 1cm × 1cm
Sides: 1cm × 4cm



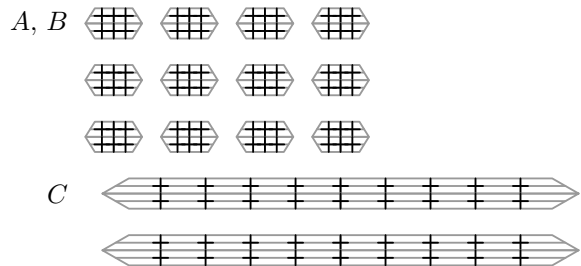
Ends: 1cm × 1cm
Sides: 1cm × 5cm

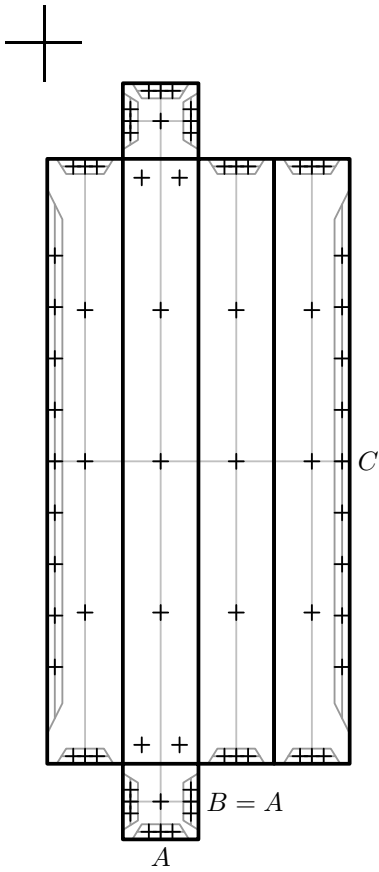


Ends: 1cm × 1cm
Sides: 1cm × 6cm

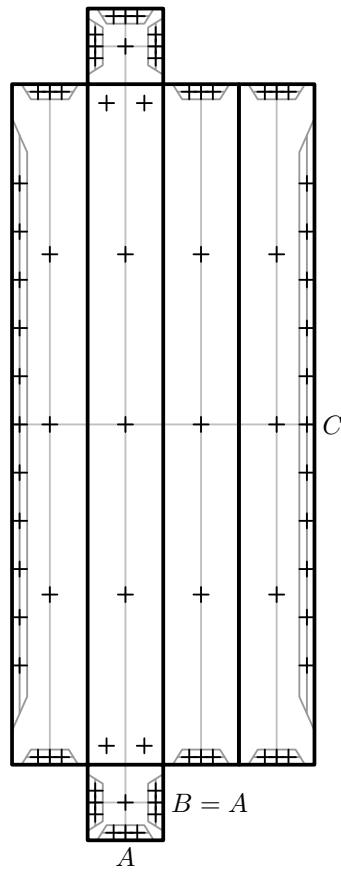
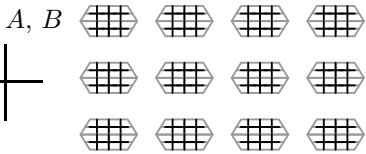


Ends: 1cm × 1cm
Sides: 1cm × 7cm

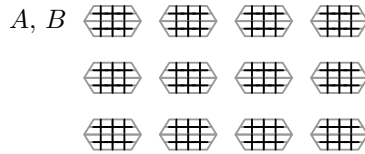


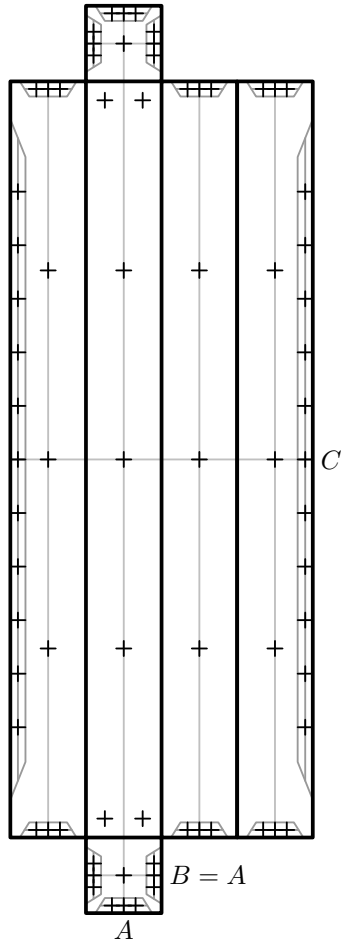


Ends: 1cm × 1cm
Sides: 1cm × 8cm

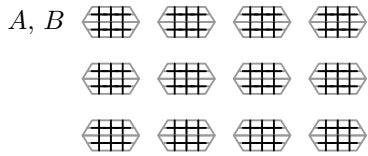


Ends: 1cm × 1cm
Sides: 1cm × 9cm



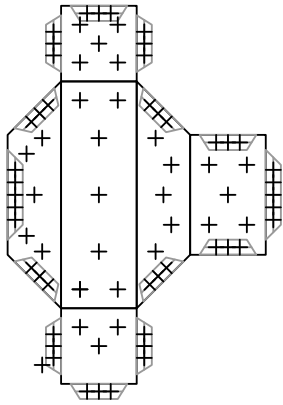


Ends: 1cm × 1cm
 Sides: 1cm × 10cm

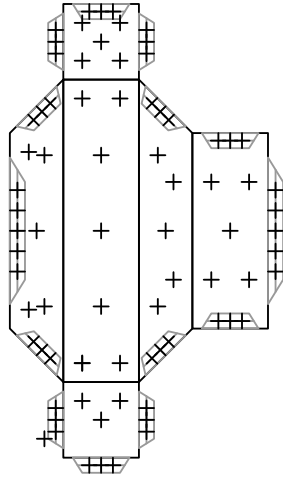


Rectangular Non-Right Prisms

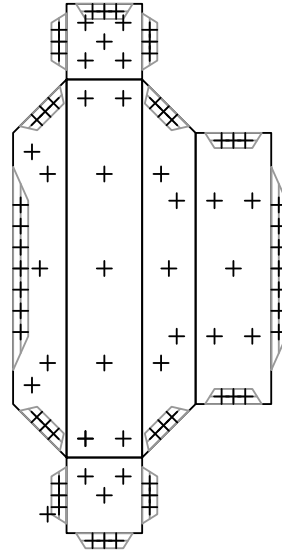
Single Tabs



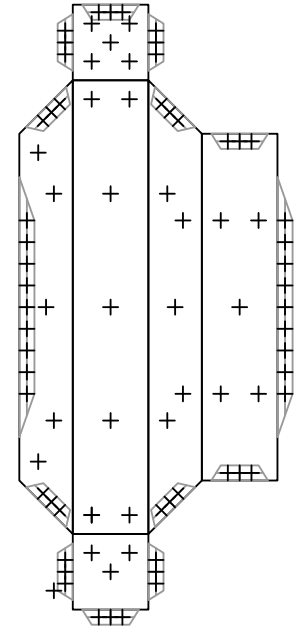
End rectangle: $1 \times 1\text{cm}$
 Side length: 3cm
 Bevels: $45^\circ, -45^\circ$



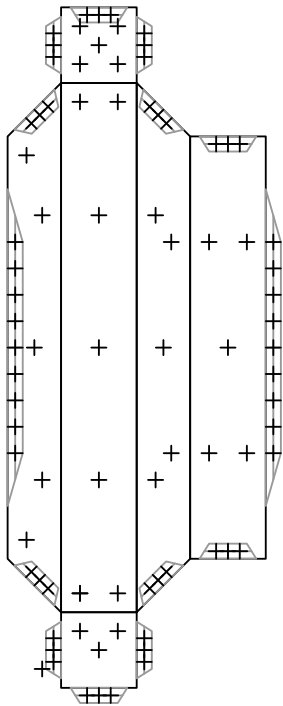
End rectangle: $1 \times 1\text{cm}$
 Side length: 4cm
 Bevels: $45^\circ, -45^\circ$



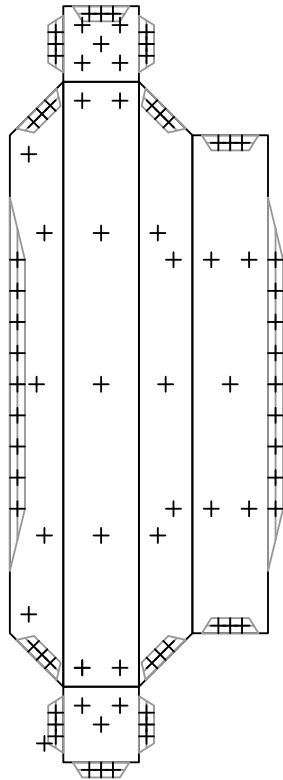
End rectangle: $1 \times 1\text{cm}$
 Side length: 5cm
 Bevels: $45^\circ, -45^\circ$



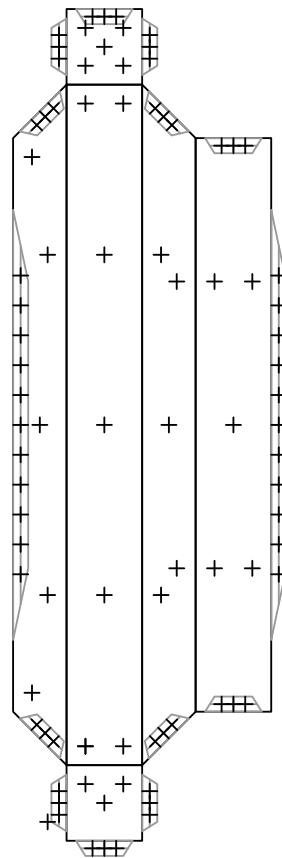
End rectangle: $1 \times 1\text{cm}$
 Side length: 6cm
 Bevels: $45^\circ, -45^\circ$



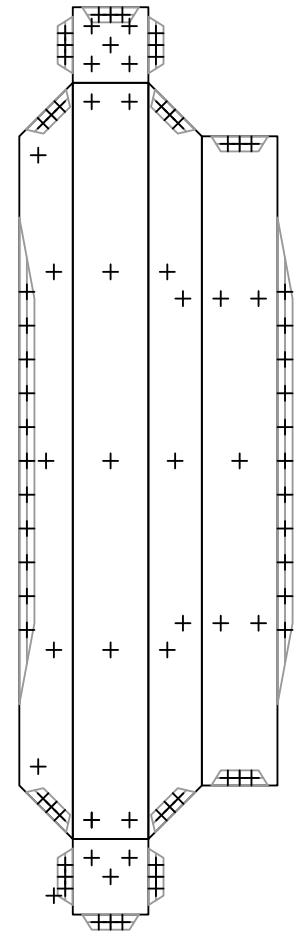
End rectangle: $1 \times 1\text{cm}$
 Side length: 7cm
 Bevels: $45^\circ, -45^\circ$



End rectangle: $1 \times 1\text{cm}$
 Side length: 8cm
 Bevels: $45^\circ, -45^\circ$

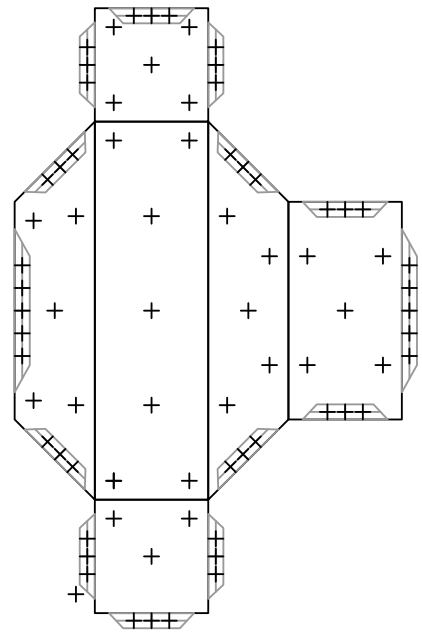
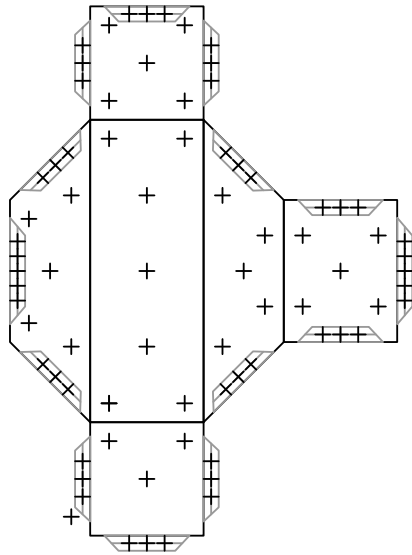
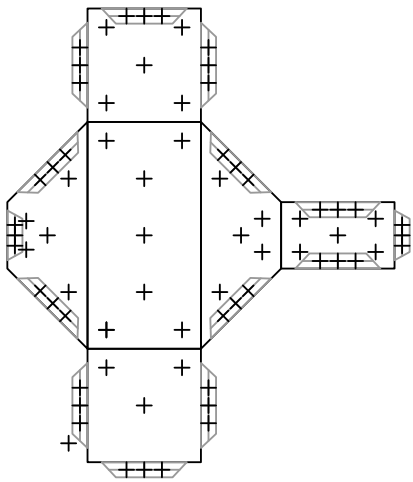


End rectangle: $1 \times 1\text{cm}$
 Side length: 9cm
 Bevels: $45^\circ, -45^\circ$



End rectangle: $1 \times 1\text{cm}$
 Side length: 10cm
 Bevels: $45^\circ, -45^\circ$

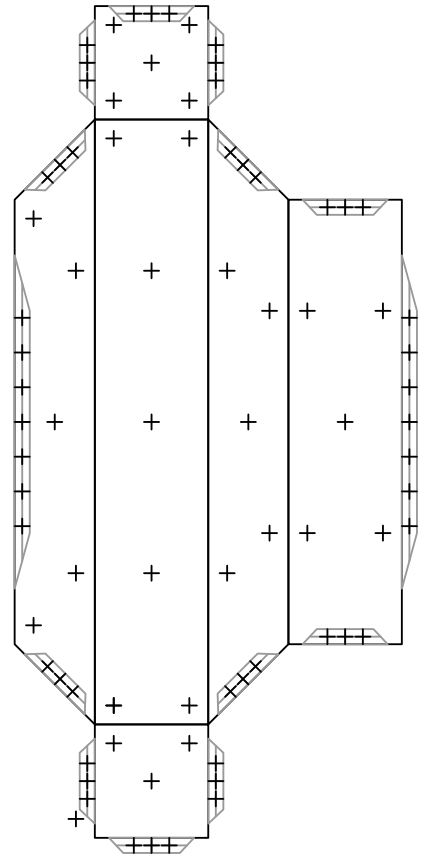
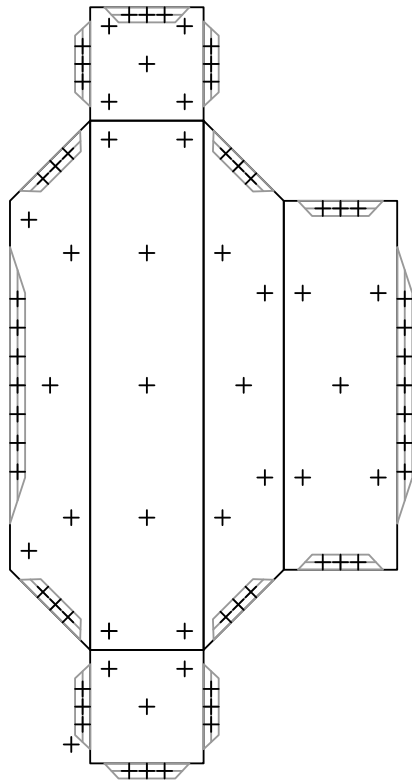
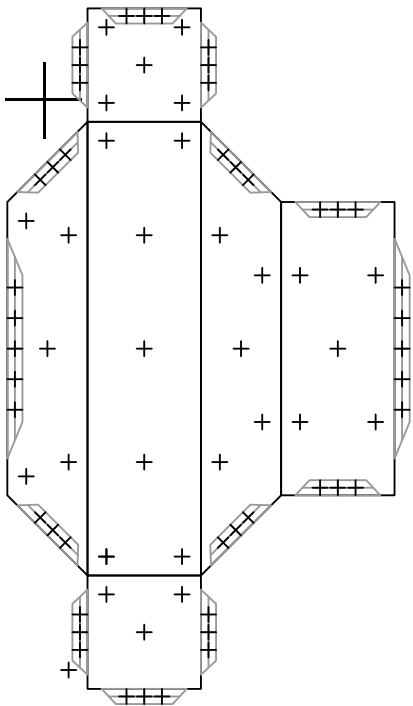




End rectangle: $1.5 \times 1.5\text{cm}$
 Side length: 3cm
 Bevels: $45^\circ, -45^\circ$

End rectangle: $1.5 \times 1.5\text{cm}$
 Side length: 4cm
 Bevels: $45^\circ, -45^\circ$

End rectangle: $1.5 \times 1.5\text{cm}$
 Side length: 5cm
 Bevels: $45^\circ, -45^\circ$



End rectangle: $1.5 \times 1.5\text{cm}$
 Side length: 6cm
 Bevels: $45^\circ, -45^\circ$

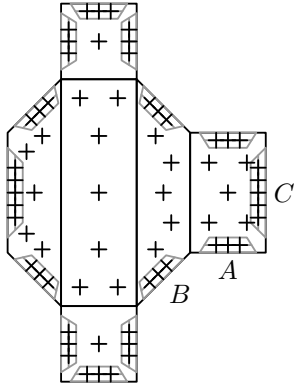
End rectangle: $1.5 \times 1.5\text{cm}$
 Side length: 7cm
 Bevels: $45^\circ, -45^\circ$

End rectangle: $1.5 \times 1.5\text{cm}$
 Side length: 8cm
 Bevels: $45^\circ, -45^\circ$

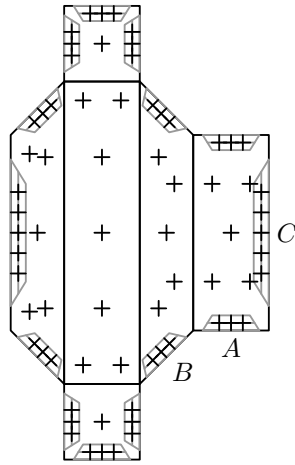
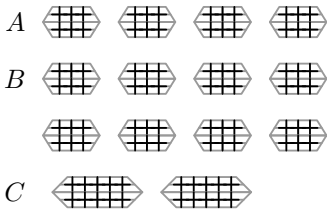


Rectangular Non-Right Prisms

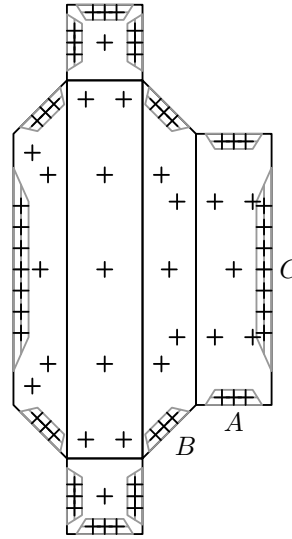
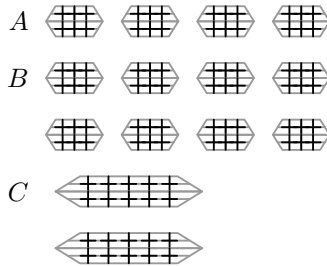
Double Tabs



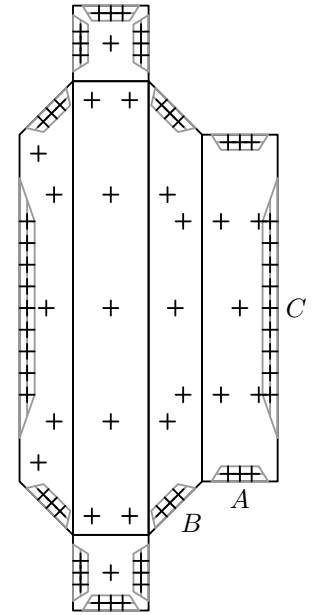
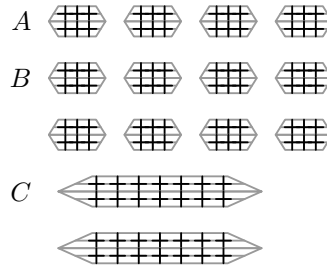
End rectangle: $1 \times 1\text{cm}$
 Side length: 3cm
 Bevels: $45^\circ, -45^\circ$



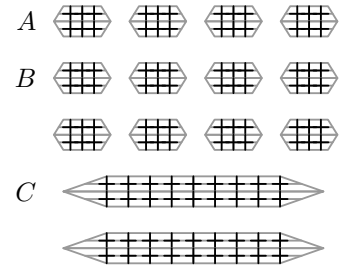
End rectangle: $1 \times 1\text{cm}$
 Side length: 4cm
 Bevels: $45^\circ, -45^\circ$

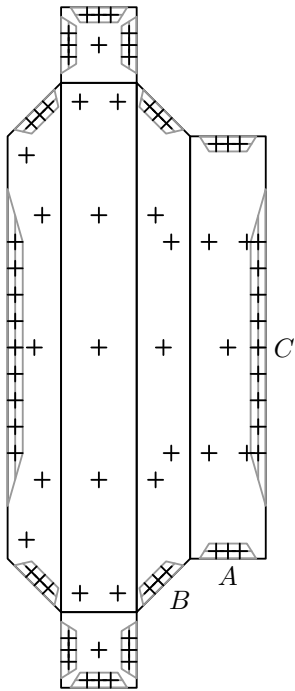


End rectangle: $1 \times 1\text{cm}$
 Side length: 5cm
 Bevels: $45^\circ, -45^\circ$

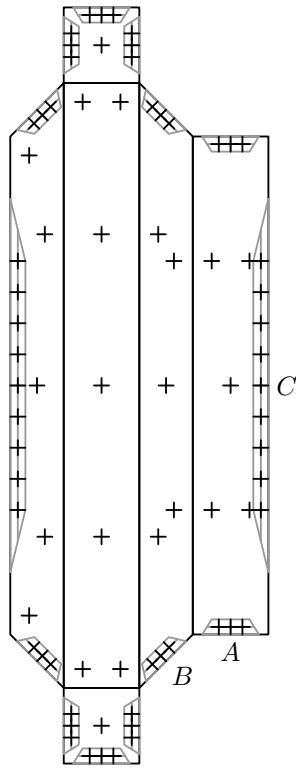
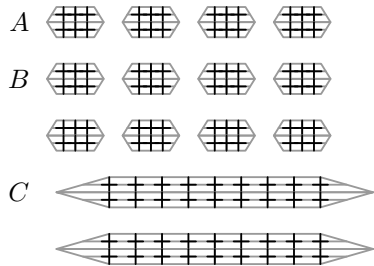


End rectangle: $1 \times 1\text{cm}$
 Side length: 6cm
 Bevels: $45^\circ, -45^\circ$

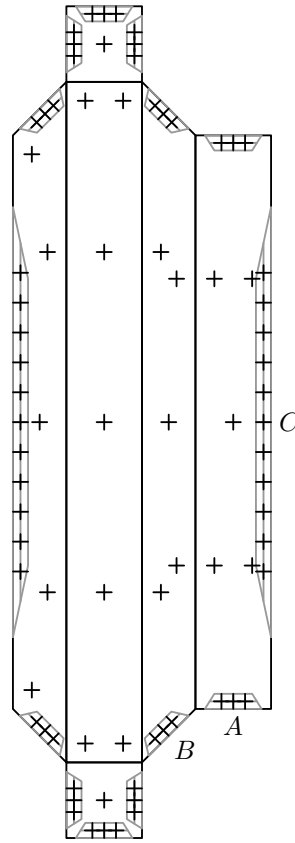
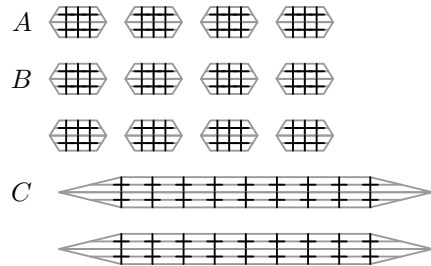




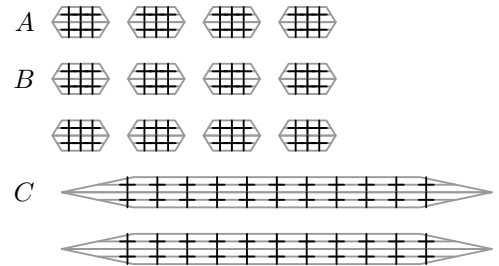
End rectangle: 1×1 cm
 Side length: 7cm
 Bevels: $45^\circ, -45^\circ$

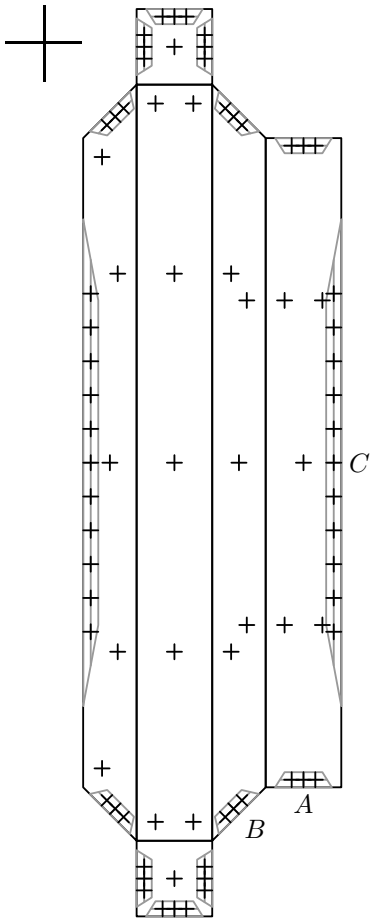


End rectangle: 1×1 cm
 Side length: 8cm
 Bevels: $45^\circ, -45^\circ$

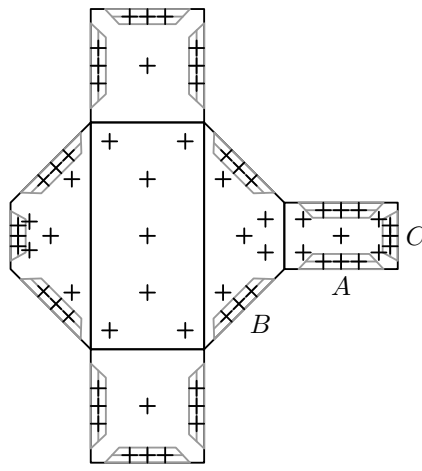
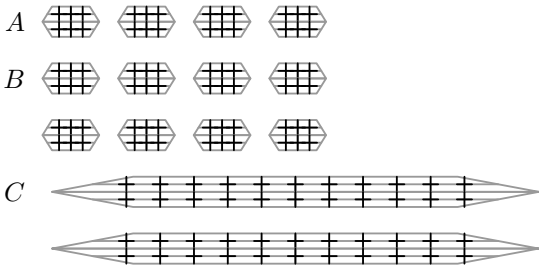


End rectangle: 1×1 cm
 Side length: 9cm
 Bevels: $45^\circ, -45^\circ$

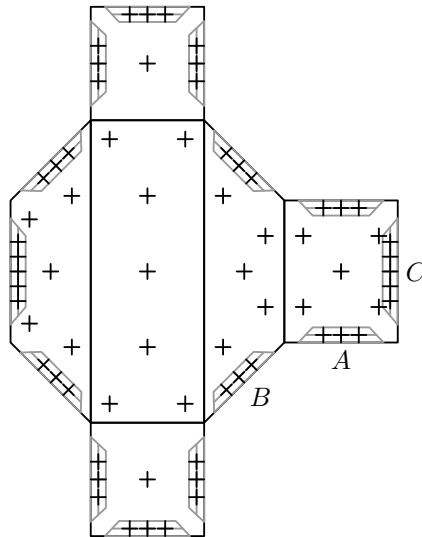
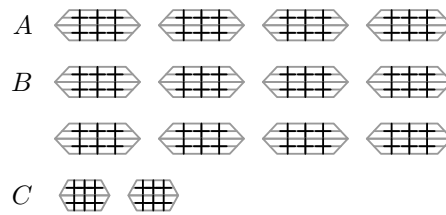




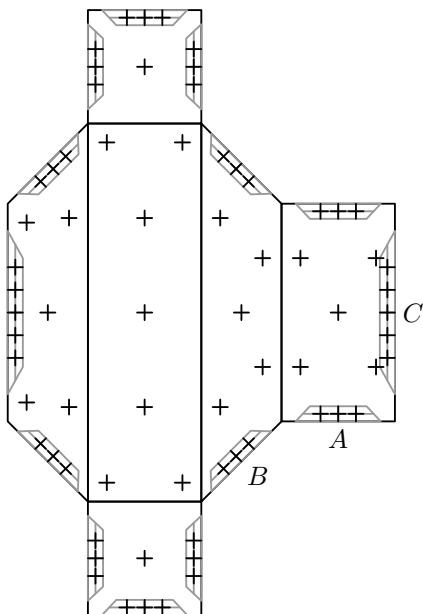
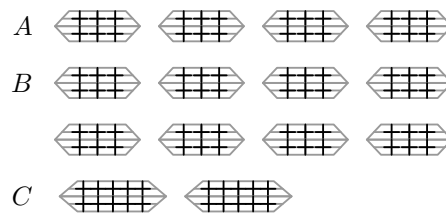
End rectangle: 1×1 cm
 Side length: 10cm
 Bevels: $45^\circ, -45^\circ$



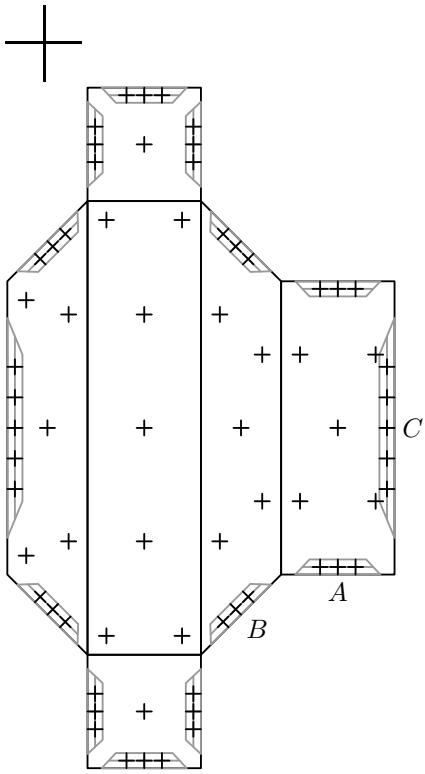
End rectangle: 1.5×1.5 cm
 Side length: 3cm
 Bevels: $45^\circ, -45^\circ$



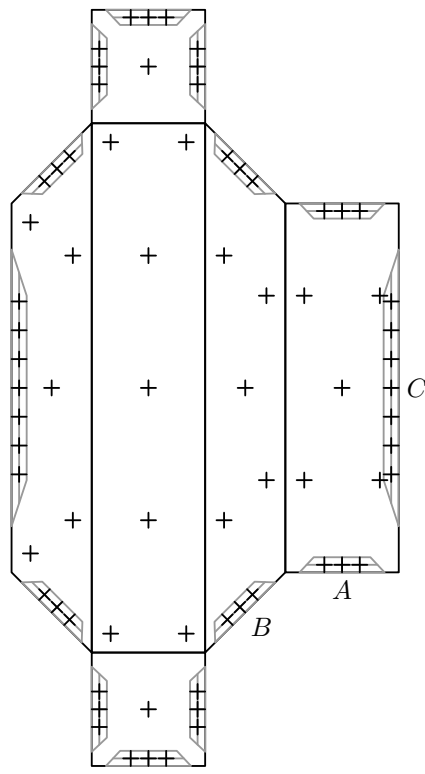
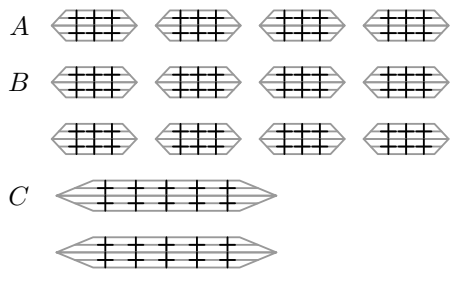
End rectangle: 1.5×1.5 cm
 Side length: 4cm
 Bevels: $45^\circ, -45^\circ$



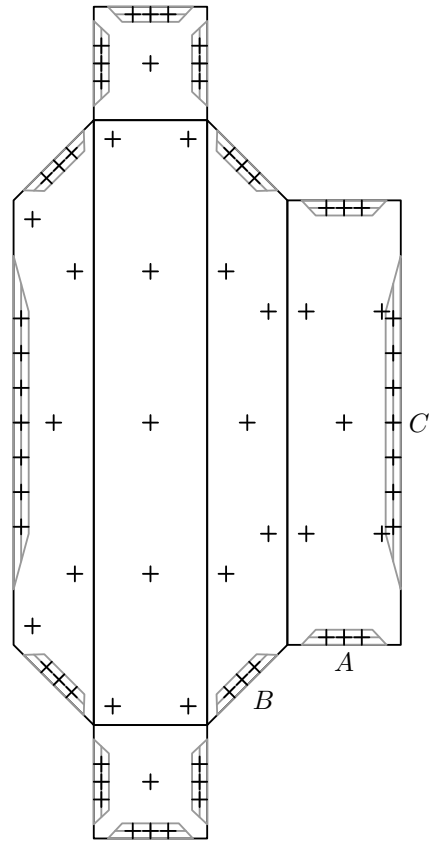
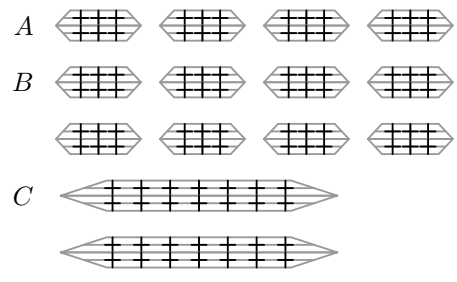
End rectangle: 1.5×1.5 cm
 Side length: 5cm
 Bevels: $45^\circ, -45^\circ$



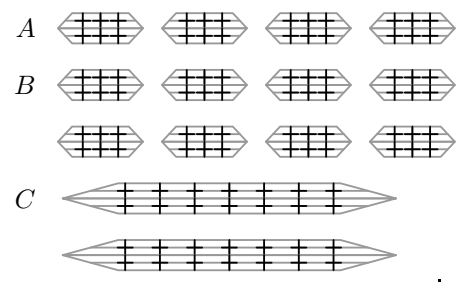
End rectangle: 1.5×1.5 cm
 Side length: 6cm
 Bevels: $45^\circ, -45^\circ$



End rectangle: 1.5×1.5 cm
 Side length: 7cm
 Bevels: $45^\circ, -45^\circ$

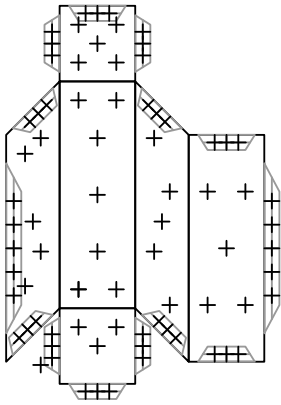


End rectangle: 1.5×1.5 cm
 Side length: 8cm
 Bevels: $45^\circ, -45^\circ$

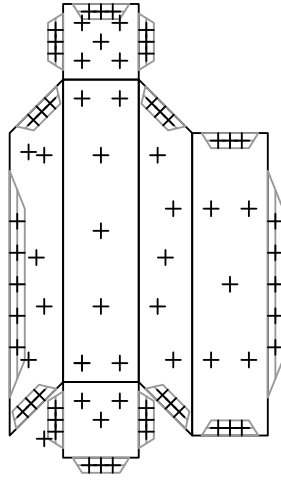


Parallelepipeds

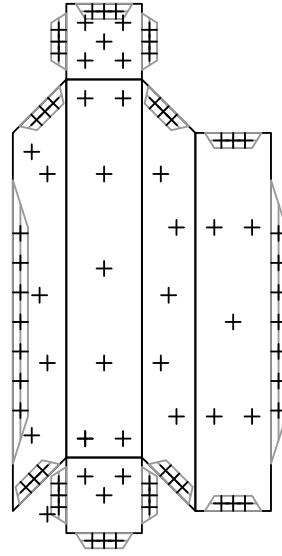
Single Tabs



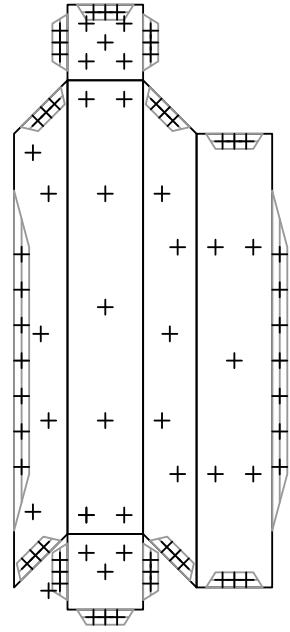
End rectangle: $1 \times 1\text{cm}$
 Side length: 3cm
 Bevels: $45^\circ, 45^\circ$



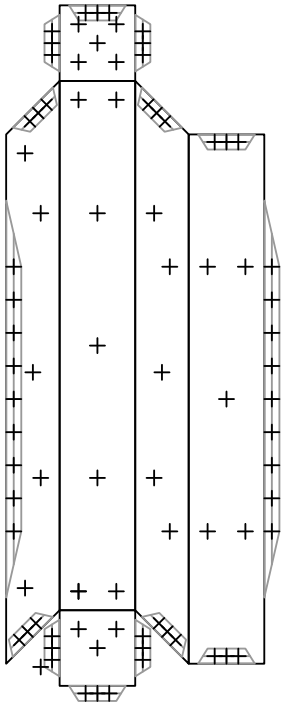
End rectangle: $1 \times 1\text{cm}$
 Side length: 4cm
 Bevels: $45^\circ, 45^\circ$



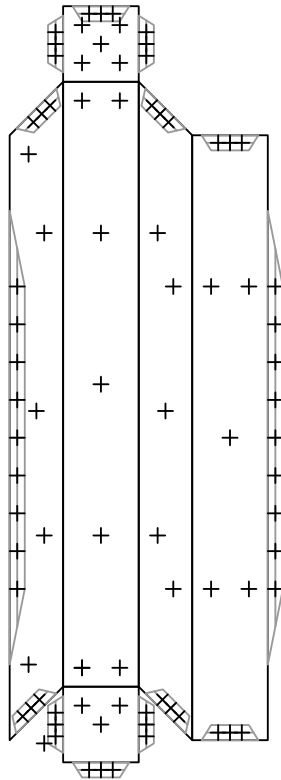
End rectangle: $1 \times 1\text{cm}$
 Side length: 5cm
 Bevels: $45^\circ, 45^\circ$



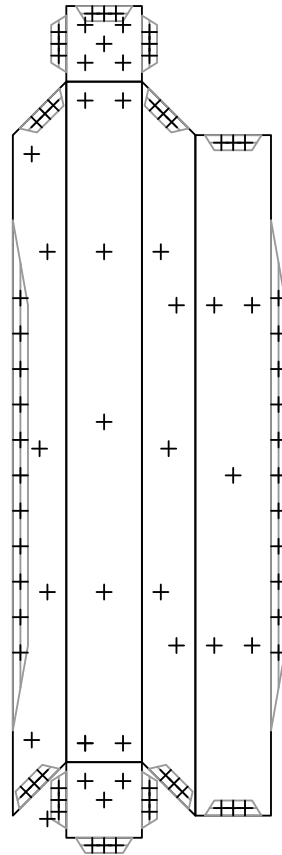
End rectangle: $1 \times 1\text{cm}$
 Side length: 6cm
 Bevels: $45^\circ, 45^\circ$



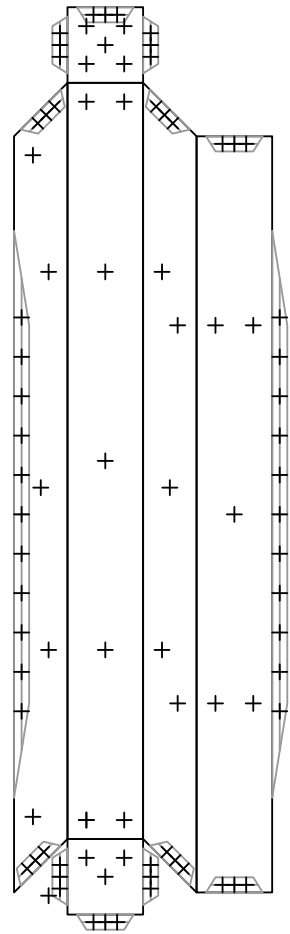
End rectangle: $1 \times 1\text{cm}$
 Side length: 7cm
 Bevels: $45^\circ, 45^\circ$



End rectangle: $1 \times 1\text{cm}$
 Side length: 8cm
 Bevels: $45^\circ, 45^\circ$



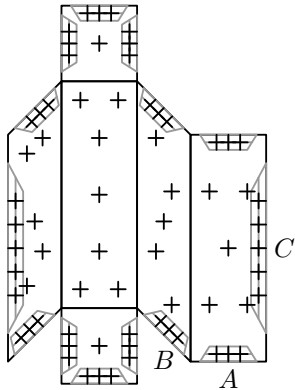
End rectangle: $1 \times 1\text{cm}$
 Side length: 9cm
 Bevels: $45^\circ, 45^\circ$



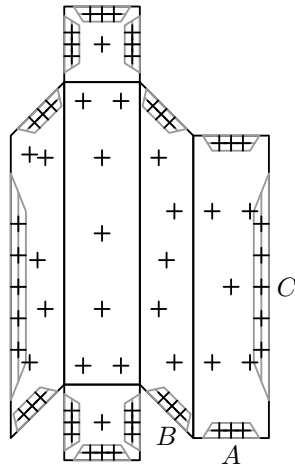
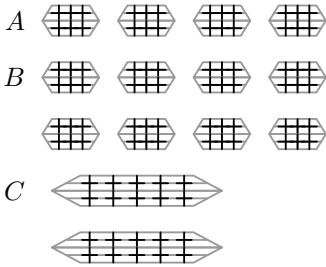
End rectangle: $1 \times 1\text{cm}$
 Side length: 10cm
 Bevels: $45^\circ, 45^\circ$

Parallelepipeds

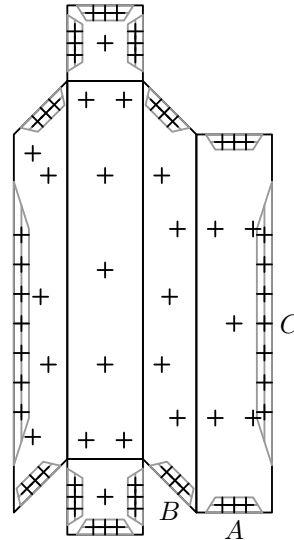
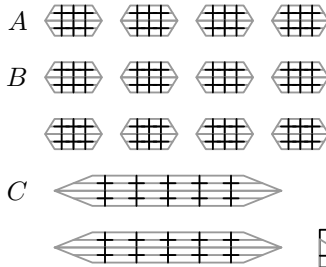
Double Tabs



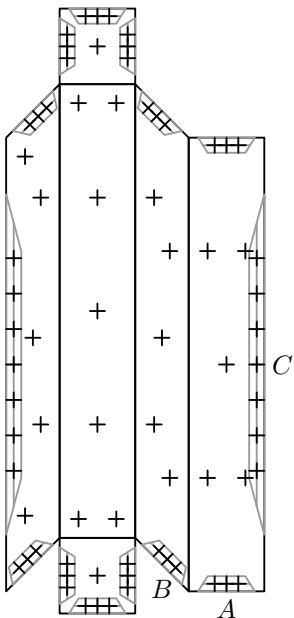
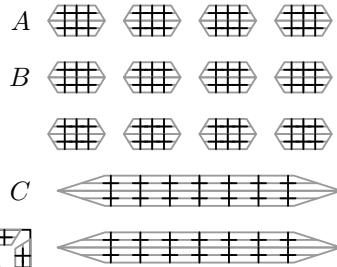
End rectangle: 1 × 1cm
 Side length: 4cm
 Bevels: 45°, 45°



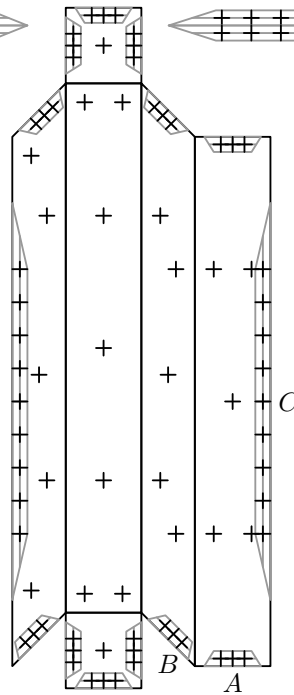
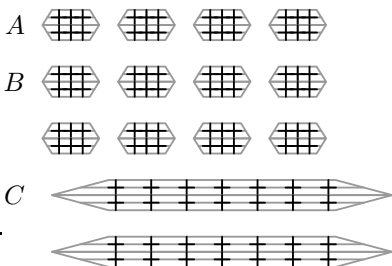
End rectangle: 1 × 1cm
 Side length: 4cm
 Bevels: 45°, 45°



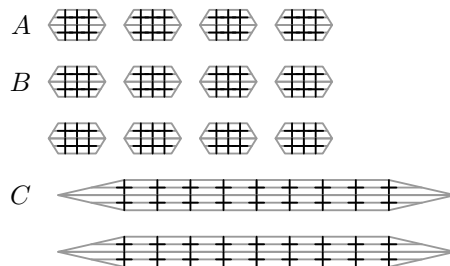
End rectangle: 1 × 1cm
 Side length: 5cm
 Bevels: 45°, 45°

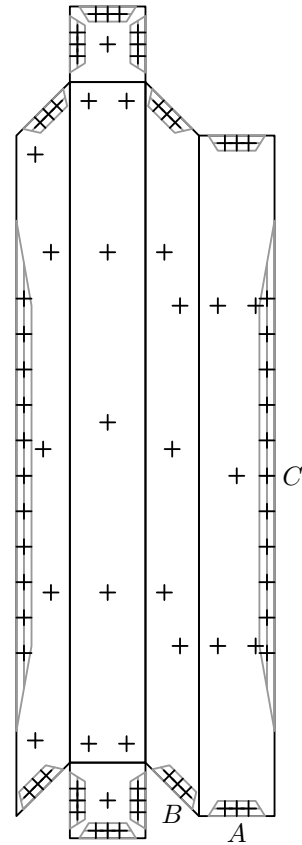
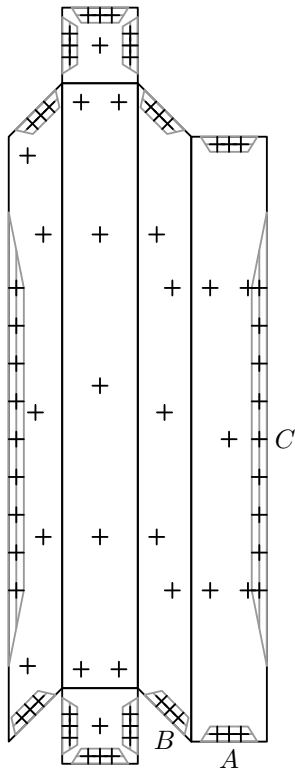
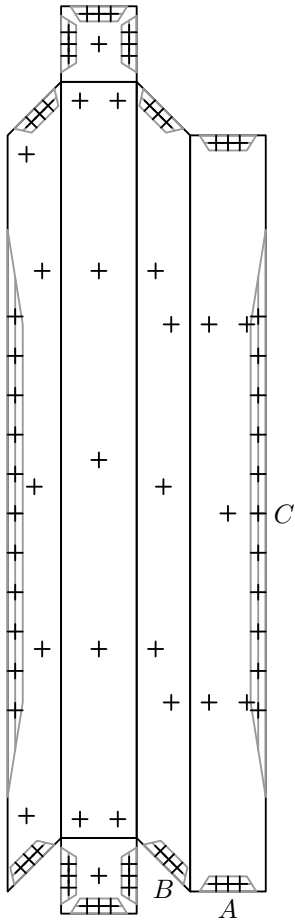


End rectangle: 1 × 1cm
 Side length: 6cm
 Bevels: 45°, 45°



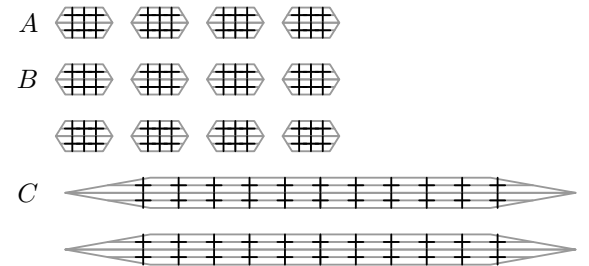
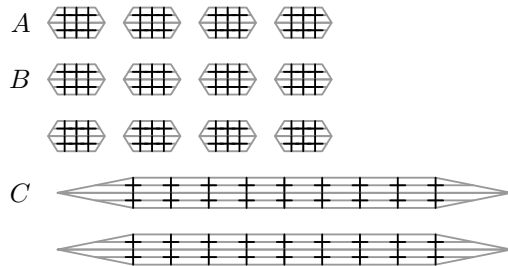
End rectangle: 1 × 1cm
 Side length: 7cm
 Bevels: 45°, 45°



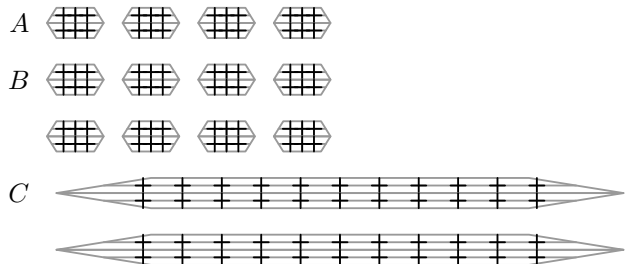


End rectangle: $1 \times 1\text{cm}$
 Side length: 8cm
 Bevels: $45^\circ, 45^\circ$

End rectangle: $1 \times 1\text{cm}$
 Side length: 9cm
 Bevels: $45^\circ, 45^\circ$

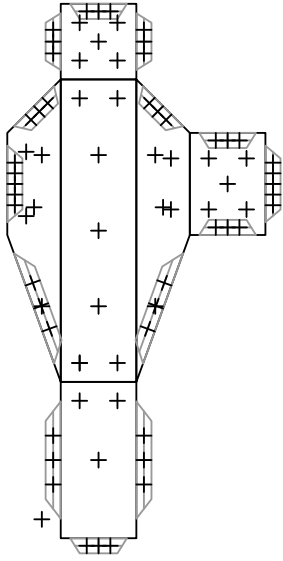


End rectangle: $1 \times 1\text{cm}$
 Side length: 10cm
 Bevels: $45^\circ, 45^\circ$

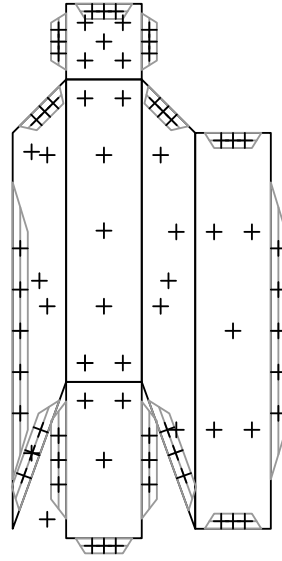


Prisms with Two Different End Angles

Single Tabs



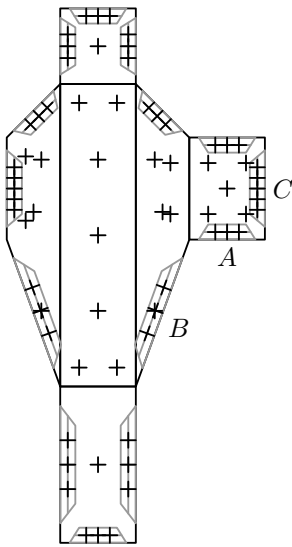
End rectangle 1: 1×1 cm
Side length: 4cm
Bevels: $45^\circ, -20^\circ$



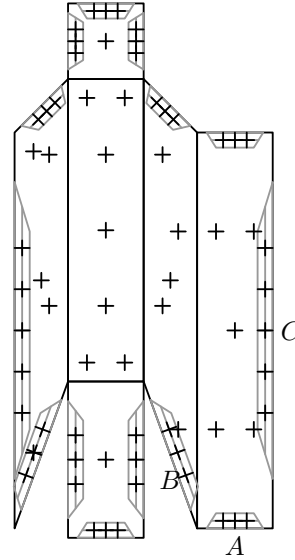
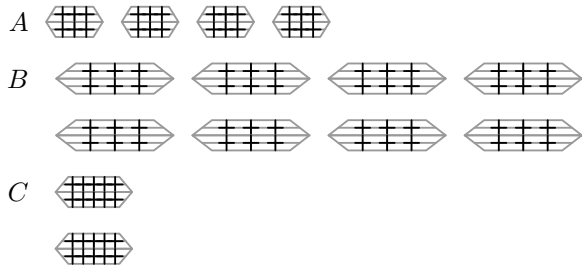
End rectangle 1: 1×1 cm
Side length: 4cm
Bevels: $45^\circ, 20^\circ$

Prisms with Two Different End Angles

Double Tabs



End rectangle 1: 1×1 cm
 Side length: 4cm
 Bevels: $45^\circ, -20^\circ$



End rectangle 1: 1×1 cm
 Side length: 4cm
 Bevels: $45^\circ, 20^\circ$

